



WEST PARK

RIGHT DIRECTION FOR A NEW LIFE



WEST PARK VA



RIGHT DIRECTION FOR A NEW LIFE

"Emtan West Park" is a multi-functional project including commercial and residential units located in Western part of Kyrenia, the tourism district, Alsancak between the mountains and the beautiful Mediterranean sea. You may reach many points in a short time by this project, which offering you the unique natural beauties of the Mediterranean Sea and a spectacular sunset view,

By the project to :

- ✳ Kyrenia center 10 minutes by car
- ✳ The first National Forest Park of Northern Cyprus and Lapta Hiking Trail 10 minutes by car

Also Close to :

- ✳ Camelot Beach Club
- ✳ Merit Hotels Region
- ✳ Girne American University and Colleges and Necat British College
- ✳ Golden Bay Beach and Escape Beach Club



At the section where quality and contemporary modern architecture meets, we offer you a life with its social areas in the natural beauty of the Mediterranean Sea. There are 11 commercial areas consisting of multi-functional and different areas. Designed aesthetically with modernity, this complex is located on the main road and offers advantageous facilities to its users with its parking spaces, stylish architectural design and landscaping areas in. In addition, suitable areas for the use of disabled individuals are planned and a leaderless structure is created in which a disabled individual could reach all social areas comfortably.

In this project :

- ✧ 14 Units 2+1 houses
- ✧ 6 Units 3+1 houses

Totally 20 units of duplex houses with mountain and sea views.

- ✧ 2+1: 124 m²
- ✧ 3+1: 165m²
- ✧ Each house has its own private spacious garden and terrace areas.
- ✧ Completion date of the project is December 2022.





Camelot Beach

Şehit Şefket Kadir Stadium

Sunset Beach Club

Santa Mare Restaurant

Green Lotus Chinese

Starling Supermarket

Capital Bank

Green Petrol

İktisatbank

Altaylar Butcher

Hürdeniz Restaurant

Dolmacı Supermarket

Alsancak Municipality

Atakara Supermarket

Rose Gardens Holiday Village

Karaođlanođlu Avenue

Karaođlanođlu Avenue

Karaođlanođlu Avenue

Karaođlanođlu Avenue

WEST PARK VA



WEST PARK

TECHNICAL SPECIFICATIONS AND MATERIALS

- ⊗ Steel Entrance Door
- ⊗ Readymade Interior Doors
- ⊗ Multi-Inverter Air Conditioning System in all Rooms
- ⊗ High Quality Laminated Kitchen, Melamine and Acrylux Doors and Granite Sink
- ⊗ Italian Lapitec or Equivalent Kitchen Worktop
- ⊗ High Quality Laminated Flooring
- ⊗ High Quality Ceramics
- ⊗ Natural Marble on Balconies
- ⊗ Deck Ceramics on Terraces
- ⊗ Double Glazed Heat Insulated Aluminiums
- ⊗ Fitted Wardrobe in all Bedrooms
- ⊗ Wooden Stairs
- ⊗ Suspended Ceilings
- ⊗ Wall-hung toilet Pan with Built-in Reservoir
- ⊗ Washbasins with Cabinet
- ⊗ Flat Shower and Tempered Glass Cabinets
- ⊗ Private Garden and Terrace Area for each House
- ⊗ Private Parking Space for each House
- ⊗ 2 Tonnes Water Tank and Hydrophore System for each House
- ⊗ Telephone Network Infrastructure System
- ⊗ TV/Satellite Infrastructure System
- ⊗ Internet/Data Infrastructure System













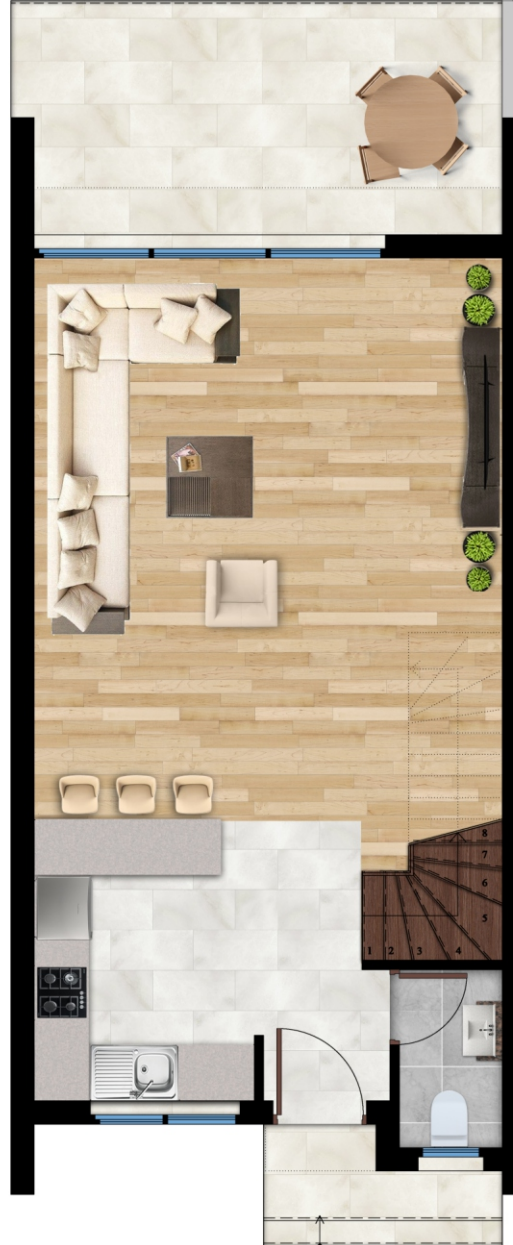


WEST PARK

2+1 PLANS

2+1 TİPİ VİLLA 2+1 TYPE VILLA	m ²
VİLLA BRÜT ALANI VILLA GROSS AREA	124
VİLLA KAPALI ALANI VILLA CLOSE AREA	107
VİLLA AÇIK ALANI VILLA OPEN AREA	17
ZEMİN KAT ALANI GROUND FLOOR AREA	68
SALON LIVING	36
MUTFAK KITCHEN	9
GİRİŞ HOLÜ ENTRANCE HALL	3
WC	3
TERAS TERRACE	17

BİRİNCİ KAT ALANI FIRST FLOOR AREA	56
EBEVEYN YATAK ODASI MASTER BEDROOM	20
YATAK ODASI BEDROOM	18
BANYO BATHROOM	5
YATAK HOLÜ HALL	7
BALKON BALCONY	6



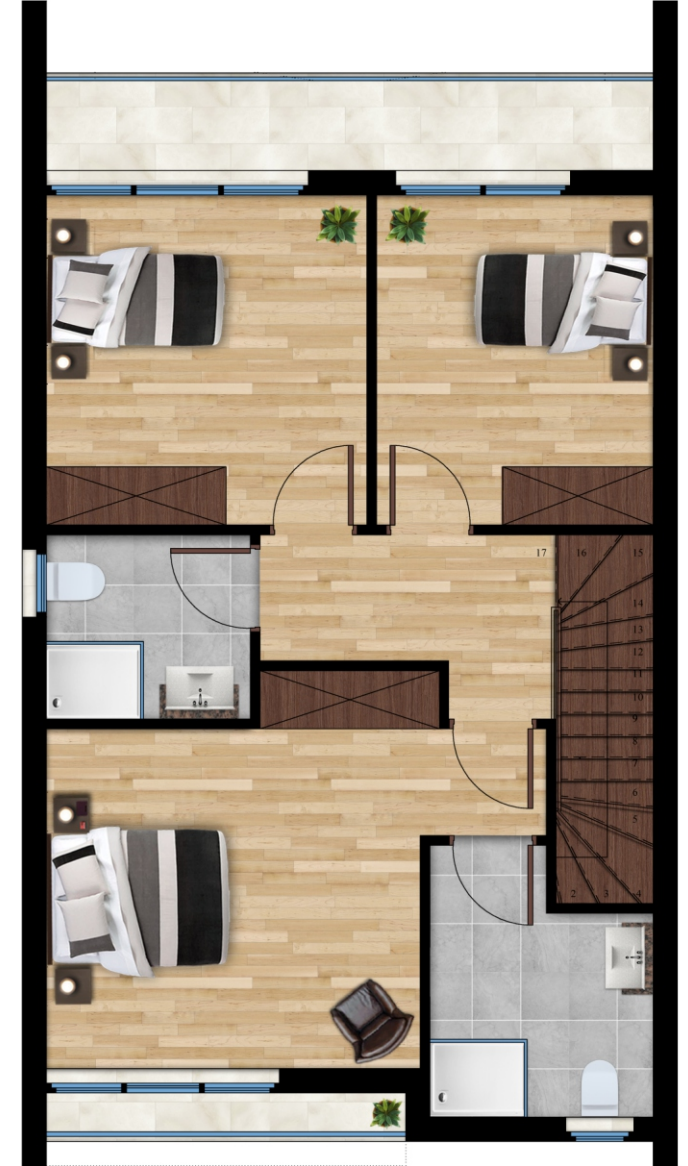
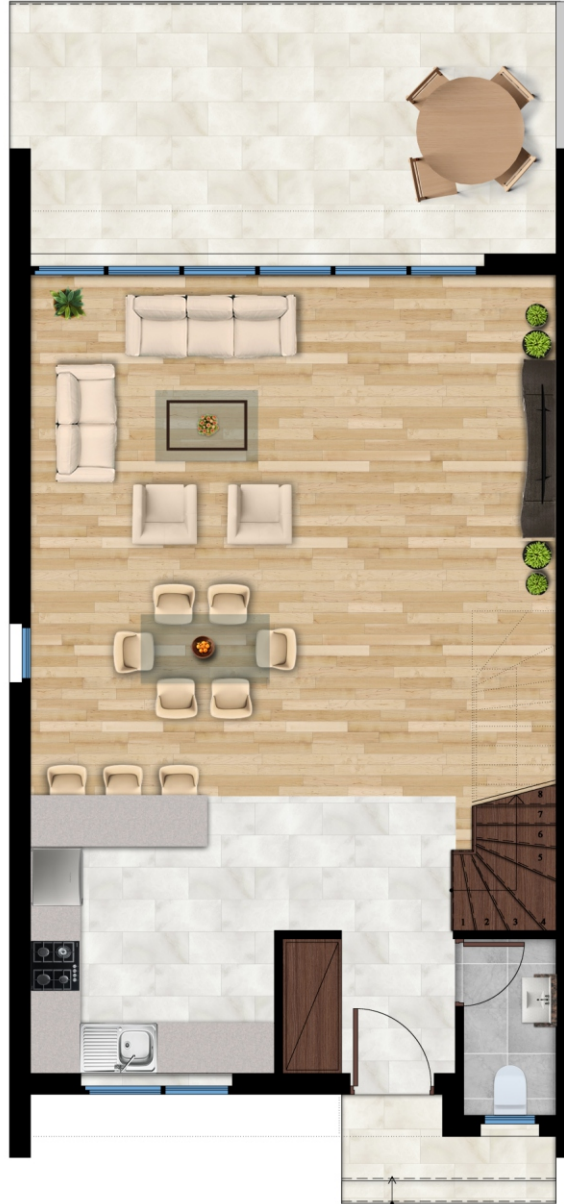


WEST PARK

3+1 PLANS

3+1 TİPİ VİLLA 3+1 TYPE VILLA	m²
VİLLA BRÜT ALANI VILLA GROSS AREA	165
VİLLA KAPALI ALANI VILLA CLOSE AREA	139
VİLLA AÇIK ALANI VILLA OPEN AREA	26
ZEMİN KAT ALANI GROUND FLOOR AREA	92
SALON LIVING	47
MUTFAK KITCHEN	11
GİRİŞ HOLÜ ENTRANCE HALL	5
WC	3
TERAS TERRACE	26

BİRİNCİ KAT ALANI FIRST FLOOR AREA	73
EBEVEYN YATAK ODASI MASTER BEDROOM	19
EBEVEYN BANYO MASTER BATHROOM	6
YATAK ODASI 1 BEDROOM 1	13
YATAK ODASI 2 BEDROOM 2	11
BANYO BATHROOM	5
YATAK HOLÜ HALL	8
BALKON BALCONY	11





COFFEE & BAR

BANK

SHOP

BARBER

Three people sitting on a bench in the courtyard.

Two people walking on the balcony.

One person walking on the ground level.



WEST PARK



COFFEE & BAR

BARBER

SHOP

BARBER

STONE

BANK

SHOP

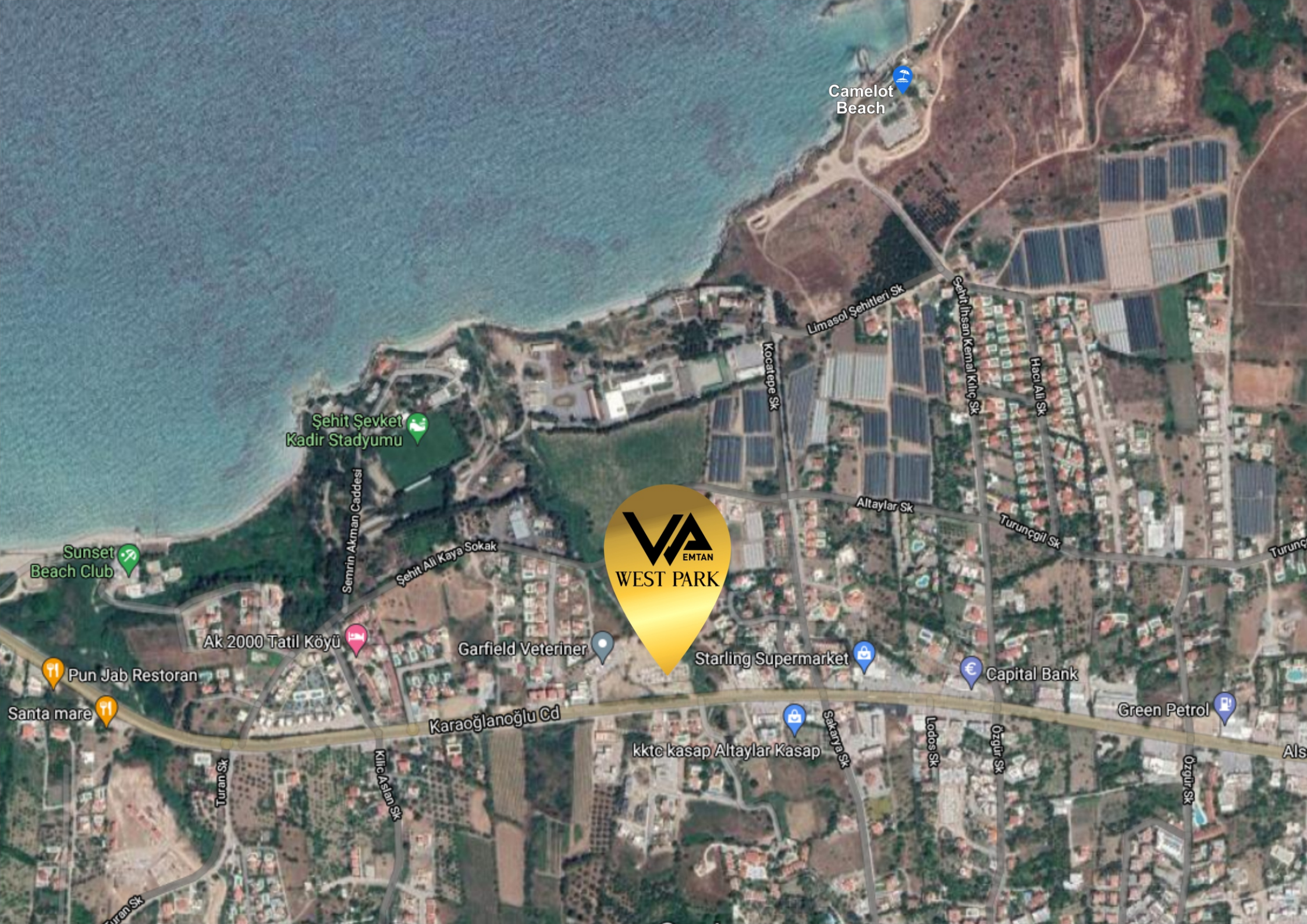
GIFT SHOP

RESTUARANT

EMTAN WEST PARK

SITE PLAN





Camelot Beach

Şehit Şevket Kadir Stadyumu



Sunset Beach Club

Ak 2000 Tatil K y 

Garfield Veteriner

Starling Supermarket

Capital Bank

Green Petrol

Karaođlanođlu Cd

kktc kasap Altaylar Kasap

Pun Jab Restoran

Santa mare

Sekarya Sk

Lodos Sk

 zg r Sk

 zg r Sk

Semrin Akman Caddesi

Şehit Ali Kaya Sokak

Limasol Şehitleri Sk

Kocatepe Sk

Şehit İhsan Kemal Kili  Sk

Hacı Ali Sk

Altaylar Sk

Turun gil Sk

Turan Sk

Kili  Alan Sk

Sekarya Sk

Lodos Sk

 zg r Sk

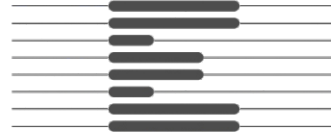
 zg r Sk



Thank You



WEST PARK



EmtanConstruction Ltd.

📍 Akasya Sokak, Emtan Quattro Apt. No.9 Girne / KKTC

☎ +90 546 991 90 90 📞 +90 392 815 4743 📠 +90 548 834 9999

✉ emtan@emtancons.com 🌐 www.emtancons.com